

# The feelings



The

days

of the week

HOW ARE YOU ?

ON MONDAY

Monday Tuesday Wednesday Thursday Friday Saturday Sunday



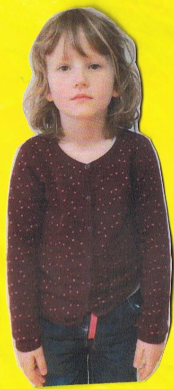


HOW ARE YOU ?

ON TUESDAY

Monday ~~Tuesday~~ Wednesday Thursday Friday Saturday Sunday

I AM



SO SO

HOW ARE YOU ?

ON WEDNESDAY

Monday Tuesday Wednesday Thursday Friday Saturday Sunday



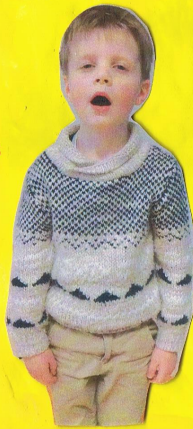
HOW ARE YOU ?

ON THURSDAY

Monday Tuesday Wednesday Thursday Friday Saturday Sunday



I AM



TIRED



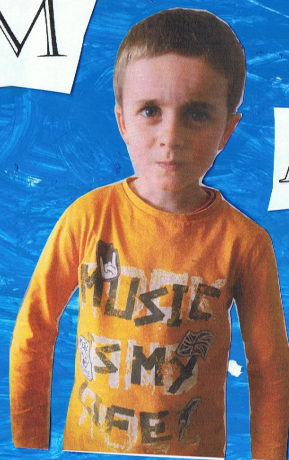
HOW ARE YOU ?

ON FRIDAY

Monday Tuesday Wednesday Thursday Friday Saturday Sunday

I AM

ANGRY



HOW ARE YOU ?

ON SATURDAY

Monday Tuesday Wednesday Thursday Friday Saturday Sunday



I AM



COLD

HOW ARE YOU ?

ON SUNDAY

Monday Tuesday Wednesday Thursday Friday Saturday Sunday

I AM



HOT

